

INSTALLING X64 DRIVER FOR MK9-USB ON A PC RUNNING WINDOWS 7

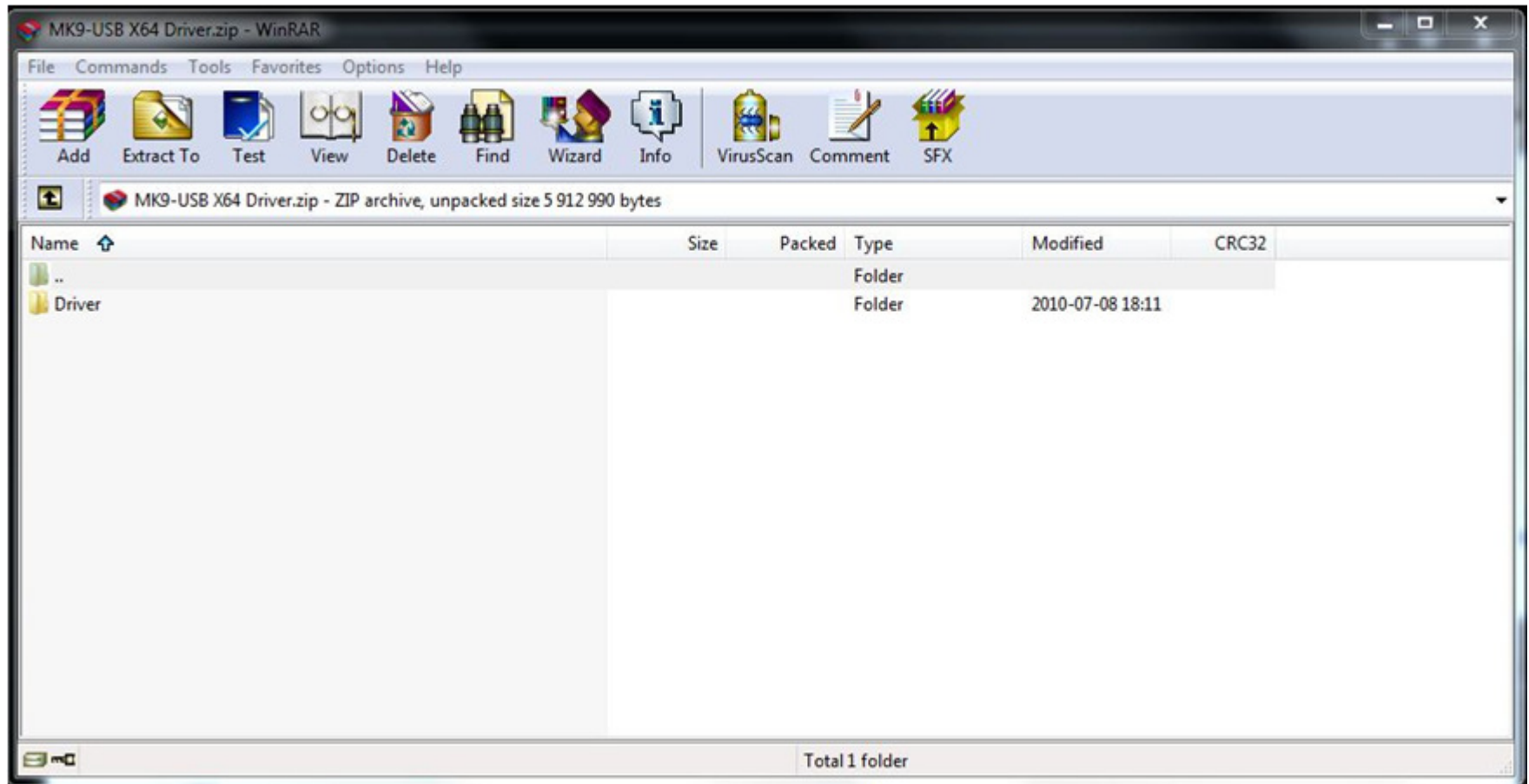
Before you start installation of the driver, make sure your MK9-USB is powered on and connected to a free USB port on your pc!

It is also important that the MK9-USB is set to "Direct Printing from PC"



INSTALLING X64 DRIVER FOR MK9-USB ON A PC RUNNING WINDOWS 7

Start by un-zipping the archive and remember where you put the folder.



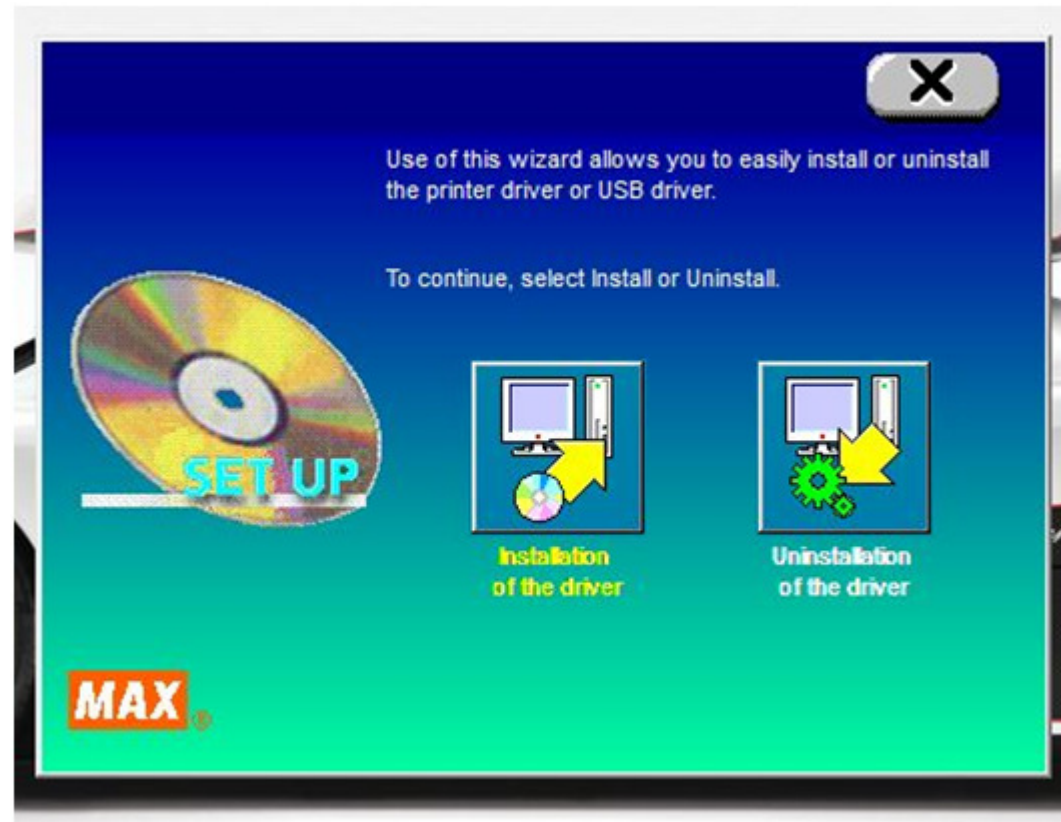
INSTALLING X64 DRIVER FOR MK9-USB ON A PC RUNNING WINDOWS 7

From inside the extracted folder, run the file named MPSSetup64

Namn	Senast ändrad	Typ	Storlek
LM390Drv	2011-05-24 15:36	Filmapp	
MPSSetup.MIF	2011-02-24 19:01	MIF-fil	4 kB
MPSSetup64.dll	2011-02-21 21:09	Programtillägg	763 kB
MPSSetup	2011-01-13 19:51	Program	54 kB
MPSSetup64	2011-01-13 19:50	Program	54 kB
MPSR040964.dll	2010-12-29 03:46	Programtillägg	352 kB
MPSR040464.dll	2010-12-29 03:45	Programtillägg	344 kB
MPSR080464.dll	2010-12-29 03:44	Programtillägg	344 kB
MPSR041264.dll	2010-12-29 03:43	Programtillägg	347 kB
MPSR000964.dll	2010-12-29 03:38	Programtillägg	352 kB
Mpsr0804.dll	2010-12-29 03:38	Programtillägg	348 kB
Mpsr0412.dll	2010-12-29 03:37	Programtillägg	352 kB
Mpsr0409.dll	2010-12-29 03:36	Programtillägg	356 kB
Mpsr0404.dll	2010-12-29 03:36	Programtillägg	348 kB
MPSR0009.dll	2010-12-29 03:36	Programtillägg	356 kB
GRPSSUP.DLL	2010-07-08 18:11	Programtillägg	112 kB
GRPSSUPW.dll	2010-07-08 18:11	Programtillägg	124 kB
GRPSSUPW64.dll	2010-07-08 18:11	Programtillägg	142 kB
MPSSetup.dll	2010-04-16 21:01	Programtillägg	656 kB

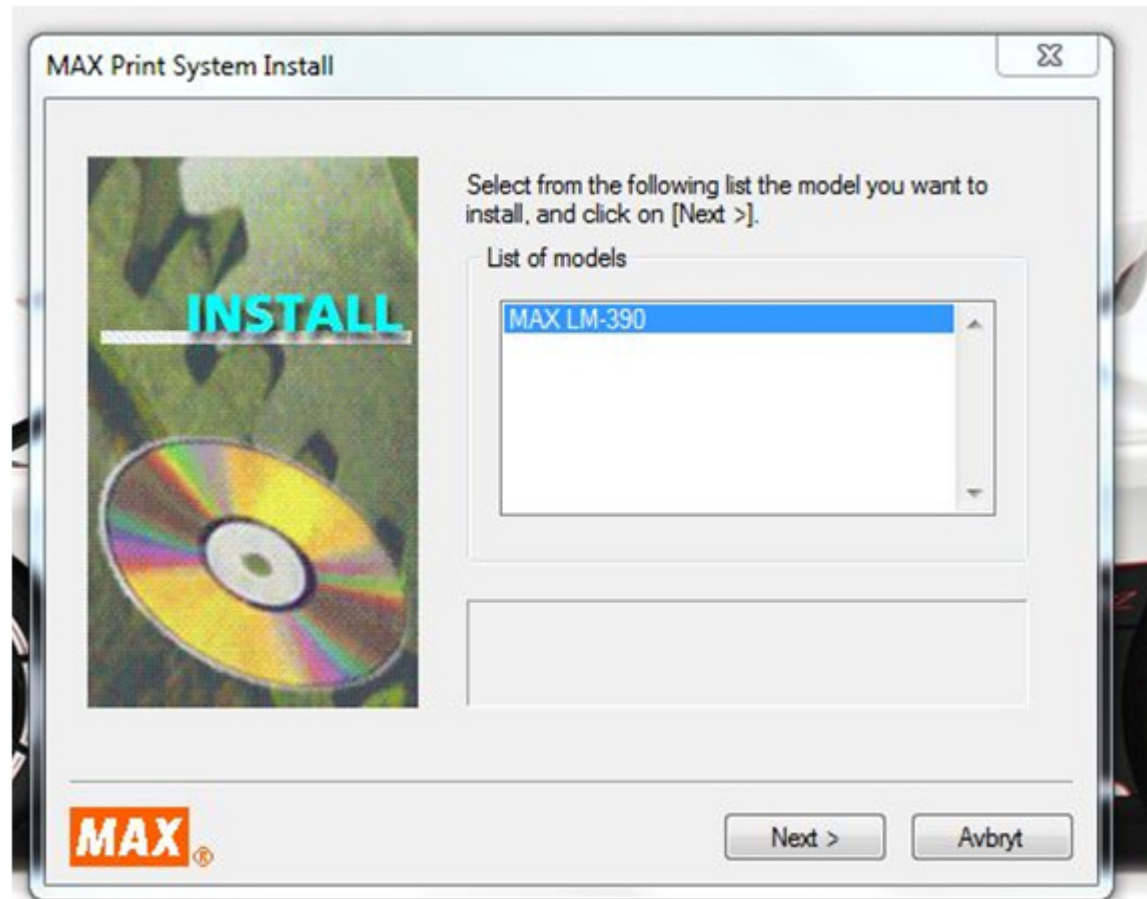
INSTALLING X64 DRIVER FOR MK9-USB ON A PC RUNNING WINDOWS 7

Choose Installation of the driver



INSTALLING X64 DRIVER FOR MK9-USB ON A PC RUNNING WINDOWS 7

Select MAX LM-390, then click Next



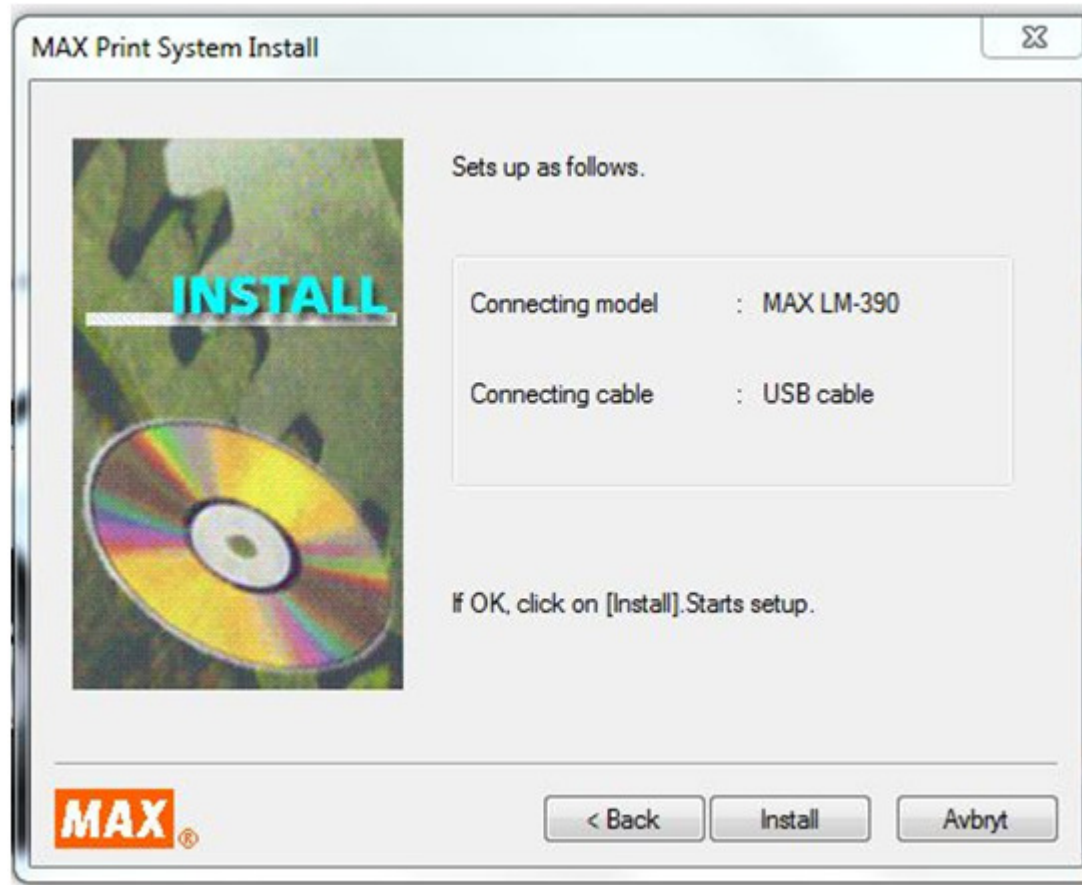
INSTALLING X64 DRIVER FOR MK9-USB ON A PC RUNNING WINDOWS 7

Select USB cable, then click Next



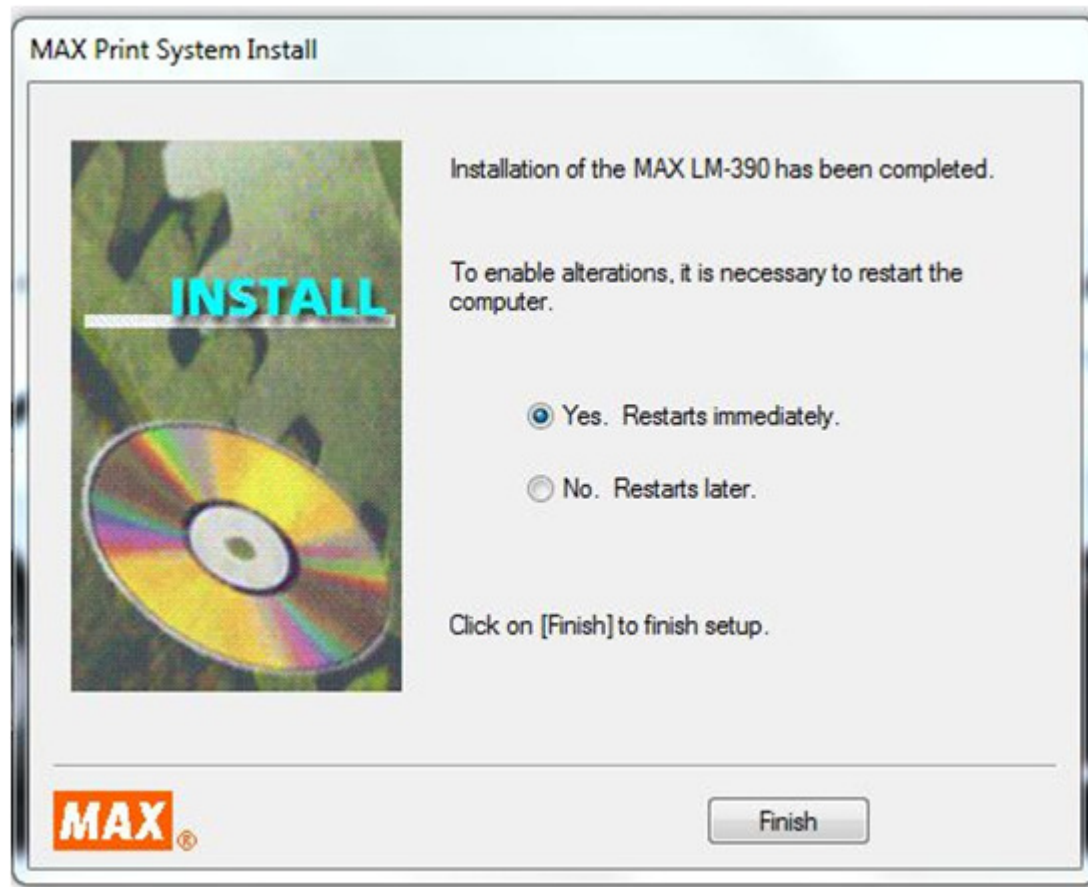
INSTALLING X64 DRIVER FOR MK9-USB ON A PC RUNNING WINDOWS 7

Click Install



INSTALLING X64 DRIVER FOR MK9-USB ON A PC RUNNING WINDOWS 7

Hopefully you will then see this picture, choose to restart now or later.
After restart you have successfully installed the MK9-USB on your PC.



INSTALLING X64 DRIVER FOR MK9-USB ON A PC RUNNING WINDOWS 7

When printing from WinSign, choose the MAX LM-390.

